

Creating Healthy Schools and Communities

1 Initiative

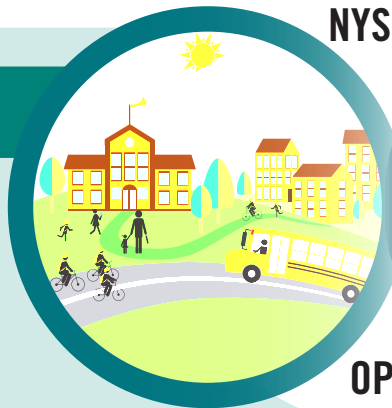
Creating Healthy Schools and Communities (CHSC) is a five-year (2015-2020) public health initiative to reduce major risk factors of obesity, diabetes, and other chronic diseases in 85 high-need school districts and associated communities throughout New York. The *New York State Department of Health (NYSDOH)* has funded local organizations and county health departments. The goal is to implement multi-component evidence-based policies, place-based strategies, and

promising practices to increase demand for and access to healthy, affordable foods and opportunities for daily physical activity for all New Yorkers. The *Obesity Prevention Center for Excellence (OPCE)*, led by *JSI Research & Training Institute, Inc. (JSI)*, strengthens the CHSC initiative's collective impact by providing technical assistance, training, resources, and a network to collaborate.

6 Strategies

SCHOOL

1. Revise, implement, and assess *local wellness policies* to improve the school environment.
2. Establish *Comprehensive School Physical Activity Programs (CSPAP)*.
3. Increase access to *healthy, affordable foods* and increase school districts' ability to meet federal *nutrition standards* for foods sold outside of school meals.



NYSDOH

COMMUNITIES

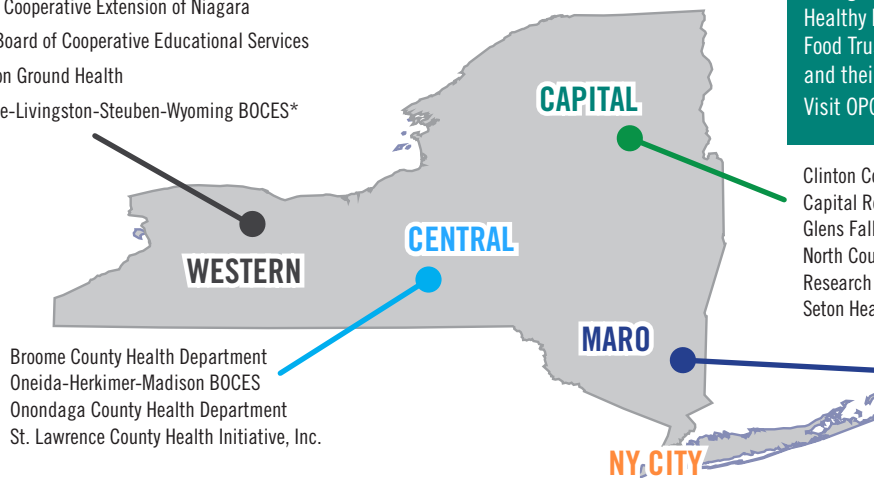
4. Increase access to *healthy, affordable foods* in communities.
5. Increase adoption and use of *food standards and procurement policies that increase healthy foods* in community sites and settings.
6. Adopt and implement Complete Streets policies, plans, and practices to increase access to *opportunities to walk, bike, and roll*.



OPCE

26 Grantees

Chautauqua County Health Network, Inc.
Cornell Cooperative Extension of Niagara
Erie 1 Board of Cooperative Educational Services
Common Ground Health
Genesee-Livingston-Stauben-Wyoming BOCES*



Broome County Health Department
Oneida-Herkimer-Madison BOCES
Onondaga County Health Department
St. Lawrence County Health Initiative, Inc.

With grant funding, JSI^ and its partners (Action for Healthy Kids, Alliance for a Healthier Generation, The Food Trust, PedNet, and more) support the 25 grantees and their partners in OPCE efforts. Visit OPCE online at: www.nyopce.com

Clinton County Health Department
Capital Roots
Glens Falls Hospital
North County Healthy Heart Network, Inc.
Research Foundation for SUNY Cobleskill
Seton Health Foundation

Cornell Cooperative Extension of Sullivan County
Nepperhan Community Center, Inc.
County of Orange
Rockland County Department of Health
Western Suffolk BOCES*

Fund for Public Health in New York, Inc.*
The Institute for Family Health

*Organization has multiple grants. ^ JSI is one of the 26 grantees.



Creating Healthy Schools and Communities



NYS Obesity Prevention Center for Excellence